



"A MILLION SMALL ACTS"

Created from multiple interventions, large and small, the Biodiversity Ring presents inspiring little steps to make it easier to address the climate and ecological emergencies.

The Biodiversity Ring will consist of soundscapes, lights, and small interventions made by artists, school children, community groups, and visitors to the site. In addition, the circle will link a sequence of larger interventions that are more interactive such as the Climate Spa and the An-ki Theatre. Participants will contribute, share, visit, eat, and make ideas come to life.

Forest of Imagination is open to all and actively inclusive. We invite children, families and people of all ages to explore, make and learn in a creative, intuitive and imaginative way. Forest of Imagination is a partnership between Grant Associates, Feilden Clegg Bradley Studios, House of Imagination, and Bath Spa University, alongside the wider creative, cultural, and educational community of Bath. Each year we re-imagine a familiar space to highlight the importance of nature and imagination in all our lives. Everyone is welcome, come along and play!

Co-founders *Dr Andrew Grant (Founding Director, Grant Associates) and Dr Penny Hay (Professor of Imagination, Bath Spa University)*

Now entering our eleventh year, Forest of Imagination is taking over The Holburne Museum and Gardens, from 26 – 30 June 2024. This year's theme will highlight a vibrant 'Biodiversity Ring' through stories and creative interventions. Taking advantage of the diverse landscapes and habitats, Forest of Imagination's physical presence will reinforce the green setting of the Museum Gardens leading into Sydney Gardens and the wider city landscapes.

26-30 JUNE 2024
OPENING TIMES

FREE
All ages welcome

OPENING NIGHT:
WEDNESDAY 26 JUNE, 6-8PM

SCHOOLS: WEDS, THURS, FRI 10AM-3PM

PUBLIC OPENING: WEDS 6-8PM, THURS 10AM-5PM, FRI 10AM-5PM AND 6-8PM, SATURDAY 10AM-5PM, SUNDAY 11AM-5PM



FOI 2024 ARTISTS AND THEIR WORK...

ALISHA STOKES & CHARLIE DAY
CHEF BEAR'S COOKING SCHOOL
An immersive storytelling and making experience, where participants learn the importance of sharing, our impact on the world and those animals that live in it. The participants will become Chef Bear's assistants and help him make 'dinner'. The experience is made from sustainable materials.

ANDREW AMONSDON
A MILLION SMALL STEPS
A Million Small Steps is a Walk of Art led by Berlin-based artist Andrew Amondson (The Living Tree Forest and Wondering Ways). You are invited to walk Forest of Imagination's Ring of Biodiversity with Andrew, discovering connections to nature and one another. Is a million small steps possible? There's only one way to find out.

TINKERTREES
Let's build something together. Follow the hidden trail to the Secret Gardens and you'll find a pile of branches and the tools to create your very own TinkerTree set. Build a lumbering forest creature or a fort and invite your new friends... "When children tinker, they are learning about the properties of materials and the capabilities of tools. They are developing their fine motor skills as well. Tinkering often leads to making something, and it is absolutely the foundation to more complex making, technology, and engineering." -NAEYC.org. With Andrew Amondson, Matthew Leece and Daniel Part.

BATH COMMUNITY KITCHEN
THE CAFE FROM THE FUTURE
Come and experience BCK2124, the Café from the Future! In 100 years, climate change may have altered our crops, necessitating new food sources. Our workshops explore this future through practical activities, creating foods and drinks that might replace familiar ones. Imagine chocolate without cocoa, coffee without beans, and maple syrup from potatoes! You can also visit the museum of lost ingredients, showcasing the last samples of popular ingredients kept as keepsakes—but don't even think about eating them!

CLIMATE SPA
SPACE FOR PLAYFUL AWAKENING
What if SPA stood for "Space for Playful Awakening" and appeared in a Forest of Imagination near you? Imagine a magical tree that flies like a hot air balloon, planted by the first Sparkitect, and run by children who see the invisible. These children offer wondrous treatments connecting us to nature's beauty. As Sparkitects, they could devise playful awakenings for Bath. Join us in a creative, immersive adventure at Holburne Museum garden and bring your imaginations.

FORESTRY ENGLAND & CULTURESHOCK
THE READING NEST
Inside The Reading Nest you can explore stories and artwork from Forestry England's first ever book *We the Forest*. The book is brimming with beautiful artwork that will ignite kids' imaginations and unveil the wonders of trees through exciting stories and scientific exploration.

FRANÇOIS MATARASSO
DOMINOES OF LIFE
Come and create a pictorial domino for our ever-growing ring of life. This game can be played by connecting colours (red with red) or ideas. Put a bee beside a flower, but take care which animals you put together. There's everything you need, and help too, for everyone to contribute, from the youngest visitor to the oldest. What will you add—a fox, a rose, a river or a volcano? The choice is yours: they all have a place in the ring of life.

GEMMA DUNNELL & JULIET DUCKWORTH
WEAVE A FOREST FLOOR
Come and learn about the UK's temperate rainforests by making a woven Forest Floor using recycled materials. Explore this precious native biome by adding your own creation to this collaborative accumulative artwork.

GRANT ASSOCIATES
DREAMER THE RABBIT
7.5 metre inflatable rabbit named Dreamer, an iconic member of the Forest of Imagination family, designed by Andrew Grant of Grant Associates.

HANNAH MCDOWALL & DAVE MARTIN
BIRTHDAY DROP IN
Drop in to join our playful conversations about birthdays. Imagine all the different birthdays happening in a forest today! What if you were a 500 year old oak tree? How would you feel about your 501st birthday? Would you like your wrinkly skin! And what if you were a slug? How would you celebrate your only birthday? This is a chance to have a conversation with a family member or stranger about forest birthdays and your birthday! If you like birthday cake this is the place for you!

SOIL DREAMING
Soil, dirt, earth, mud. In the airless dark beneath our feet all manner of animals, plants, fungi and bacteria are making the stuff from which the forest recreates itself; glorious nourishing soil! In this session we will experience the many smells, sounds and textures of soil and explore together what it is and how it sustains so much life. We will imagine that people also grow from soil. I wonder, what kind of soil helps you to be creative like a happy forest?

KIDICAL MASS X FOREST OF IMAGINATION
THE MOVING FOREST
A collaboration with Kidical Mass and Forest of Imagination. Cycling to Sydney Gardens from Bath City Football Club. Join the moving forest as we cycle through a forest of our collective imaginations. Each bike will be its own mini forest, coming together to form one large moving forest, so we can reimagine Bath as a safe, biodiverse cycling sanctuary.

KILTHER THEATRE
MOTHER NATURE'S SUPPER CLUB
Imagine if all the living creatures of the forest could gather together around a table to discuss their plight. What would they suggest for the human problem? It's time to find out. Join Kilter's Oily & Caroline as they explore new characters, soundscapes & playful ideas for an experimental interactive experience to be developed fully next year.

MARTYN WARE, TIM WHEATER & CHERUB SANSON
EMPATH MACHINE
Composed by Martyn Ware, Tim Wheatler and Cherub Sanson and kindly supported by Monitor Audio Group. Immerse yourself in this hypnotic three-dimensional soundscape featuring an electronic compositional response to the soundworld of naturally resonant acoustic instruments. The contrast between the natural and electronic worlds embodies paradoxically both a warning and a hope for a more considered technologically-enabled future and the inevitability of a new reality.

PAMELA FALKENBERG, JACK COCHRAN & LUCY ENGLISH
CANCER ALLEY
Cancer Alley is a poetry film about environmental destruction in Louisiana's 'Cancer Alley', highlighting the need for corporate responsibility and raising public awareness of extreme pollution. The film showcases the experiences of residents in polluted areas and calls for action to protect our environment. It addresses the urgency of changing our ways amidst increasing plastic production. The poetry, written by Lucy English, draws inspiration from local residents and indigenous leader Manari Ushigua Santi.

OLIVER WALLACE, PATCHLARKS
MYSTERIES OF THE MINI-FORESTS
Disappear into a patch of moss in this interactive storytelling show. Join Bryony, the tiny scientist, to explore this tiny habitat and discover an incredible world of super-resilient plants, giant raindrop swimming pools and fearsome beasts!

PETER VILK & ROXANA VILK
LOOP THE LOOP
Create a live forest soundscape with unusual percussion instruments, found objects, and our imaginations. What does the forest really sound like? What stories can we tell with these sounds? Bring a "forest related" object or something you like the sound of for recording and playing with sonic textures. Using music technology and nature's objects, we will explore live sampling and looping to create unique soundscapes, available as an mp3 to share.

STICKY ENDS
Sticky Ends is an energetic, funny and often surreal improv' show for family or school audiences that riffs off the form of cautionary tales. Its intention is to make an absolute mockery of the tradition of heavy moralising that features so much in children's theatre.

YOUNG GREEN CREATORS
Young Green Creators are a newly established small group looking to provide climate focused events for young people aged 16-25. Their aim is to help educate young people on democracy, climate change and activism.

CREATIVES NOW
Creatives Now is an arts collective for 12-18 year-olds in Bolton. The collective is youth-led and dedicated to co-design, and a platform for young people to express themselves through art and creativity.

LOCATION MAP

FOREST OF IMAGINATION 2024 • HOLBURNE MUSEUM, BATH BA2 4DB

KEY

1. MYSTERIES OF THE MINI-FORESTS
2. BIODIVERSITY RING
3. READING NEST
4. AN-KI
5. CREATURES OF THE FOREST
6. BATH COMMUNITY KITCHEN
7. CREATIVITY WORKSHOP
8. EMPATH MACHINE
9. DREAMER THE RABBIT
10. WHAT CAN WE LEARN FROM A DROP?
11. CLIMATE SPA
12. BATH MIND
13. MOTHER NATURE'S SUPPER CLUB
14. THE CLORE

GUARDIANS OF EARTH

NATURE REALM
DIGITAL EXPERIENCE
Guardians of Earth have very kindly sponsored and created a Nature Realm in and around the Holburne Museum Gardens. Record the diverse life you encounter and contribute to global biodiversity research. Give the *Spirits of the Realms* game a go too!

VISIT REALM
guardiansofearth.io

To see Forest of Imagination continue to grow and return each year please donate by visiting localgiving.org/charity/hoi/project/foi/

Thank you for your support

ACCESS INFORMATION

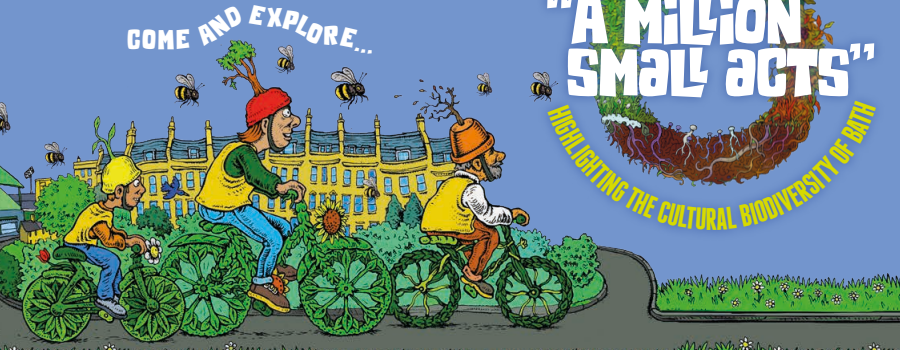
The Holburne Museum is fully accessible for all visitors. There is level access to the front door which opens and closes automatically. The ground floor is level and is where you'll find the Garden Cafe. There is a lift to all floors. Please visit website for more information:
www.holburne.org/planning-your-visit/accessibility/

EVENT GUIDE

FREE
All ages welcome!

26-30 JUNE 2024

THE HOLBURNE MUSEUM & GARDENS
BATH BA2 4DB



FORESTOFIMAGINATION.ORG.UK

