



SPONSORSHIP PACK

ASSEMBLE IN THE FOREST

14 June –
14 July 2023

REGENERATION • GREEN & BLUE INFRASTRUCTURE
WILDLIFE CORRIDORS • FOOD & FUN

Transforming the areas in:
The Assembly Rooms, Bath BA1 2QH
Bartlett Street and beyond

FREE
All ages
welcome

forestofimagination.com





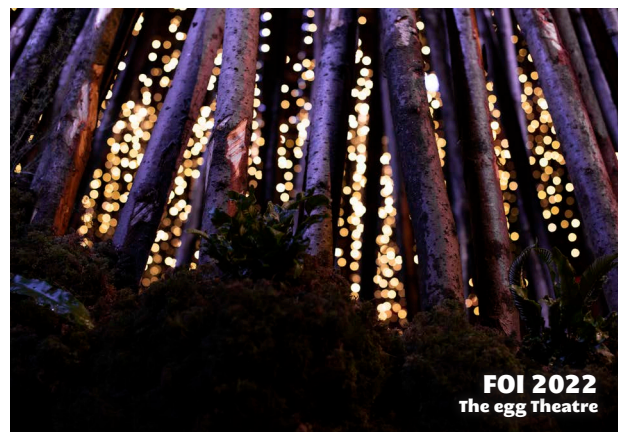
Forest of Imagination 2023

The spectacular Assembly Rooms, Bartlett Street and surrounding spaces will be the venue for the 2023 Forest of Imagination where we will celebrate 10 years as a contemporary arts event in Bath. Creative wellbeing community outreach work will take place in schools from March 2023.

Forest of Imagination is seeking sponsorship to help us reach our fundraising goal.

Forest of Imagination is a partnership between Grant Associates, House of Imagination, Feilden Clegg Bradley Studios and Bath Spa University working alongside the creative, cultural and educational community of Bath. Each year we re-imagine a familiar space to highlight the importance of nature and imagination in all of our lives.

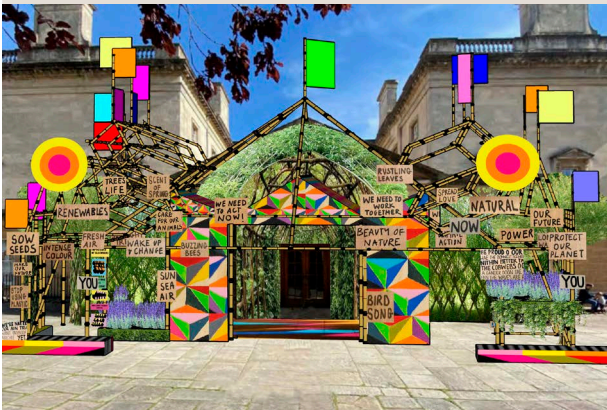
In 2023 key core partners include Rainforest Concern, Bathscape, The Big Draw, Lost Robot, More Trees Banes and The National Trust. Each year Forest of Imagination attracts 10,000 people, with 90,000 engaged online in 2020-21. See our 2022 event by visiting our website forestofimagination.com.



ASSEMBLE IN THE FOREST

Assemble in the Forest is an inclusive community sharing and exceptional arts event, drawing people to the spectacular Assembly Rooms in Bath. The Assembly Rooms are a significant part of the World Heritage Site of Bath and played an important role in Georgian society. Convening artists, creatives, musicians, local activist groups, families and businesses in this space of splendour and beauty - we will collectively respond to the climate emergency and the role society must now play in protecting our forests and trees.

Artist Morag Mysercough's dynamic and colourful installation will create a distinct, tactile, bold and interactive sculpture, framing the Assembly Room entrance. Externally we imagine creating an 'Urban Glade', a calming green space in the city but also a venue for interactive installations, stories, music, creative interaction and for placing a focus on the life and diversity of the forest.



Inside, you will be immersed in canopies of interactive installation and sculpture; enveloped in ecological art; surrounded by a cacophony of sound, music and movement. Amble through diverse, magical swathes of wildlife; awaken all the senses through soundscaping, digital and immersive experiences.

The National Trust has kindly invited Forest of Imagination to develop a unique event as part of their transition plans for the world-famous Assembly Rooms which will reimagine the building as a focus for the community of Bath. We are planning an exciting three week programme of talks, exhibitions, discussions and events around the 3 day event, with input from the Royal Society of Arts, environmental and humanities subjects.

Benefits for sponsors

- Your logo/name on our website, which sees over 2000 unique visitors every month
- Your logo/name on all our marketing material – posters, flyers, event programmes, press releases
- Media exposure through our press coverage
- Promotion via Social Media
- Sponsors' area in our House of Imagination for your marketing materials
- For sponsorship over £1,000, we will arrange a workshop for your business with one of our artists during the event
- For sponsorship of a specific artwork you will be credited accordingly in our event programme

£1,000 will pay for materials for schools' workshops

£3,000 will pay for artists providing creative installations and performances for families

£5,000 will pay for installations, community led experiences and local creative contributions

£10,000 will pay for outreach arts & wellbeing programmes in 10 schools, targeting young people who may not usually access the arts

£15,000 - £20,000 will sponsor or create a whole themed space - transforming one or more of the grand formal spaces into an abstract reflection of a forest; or alternatively create a legacy project such as a quest trail map or further exhibition (you can be involved in shaping this project).

For additional sponsorship options please contact us.

Thank you for considering our request and we are more than happy to talk with you, answer any questions, come and present to your board, and or anything else that you may think suitable.

Thanking you, your support is much appreciated.

Yours,

Dr. Penny Hay

**Co-founder, Forest of Imagination
House of Imagination and
Bath Spa University**



Confirmed 2023 sponsors & partners



FeildenCleggBradleyStudios



BBC
Research &
Development



Business
Improvement
District



BUROHAPPOLD
ENGINEERING



IMAGINNOVATION®



Bath & North East
Somerset Council



Kaleidoscope
Collection



WEST OF
ENGLAND
Combined Authority



The Peter Stormonth Darling Charitable Trust



DONATIONS

FOREST OF IMAGINATION 2023

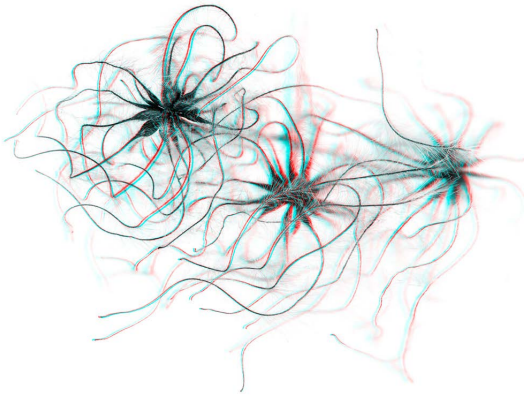
We receive much of our funding from generous people like you. By setting up a regular donation to House of Imagination you can support our long-term work to enhance wellbeing and transform lives, communities and cities.

Reliable income means we can plan our work more effectively helping us to achieve more.

Look out for this
button on our
website:



Sebastian Cramer,
TWO VIEWS on Plants



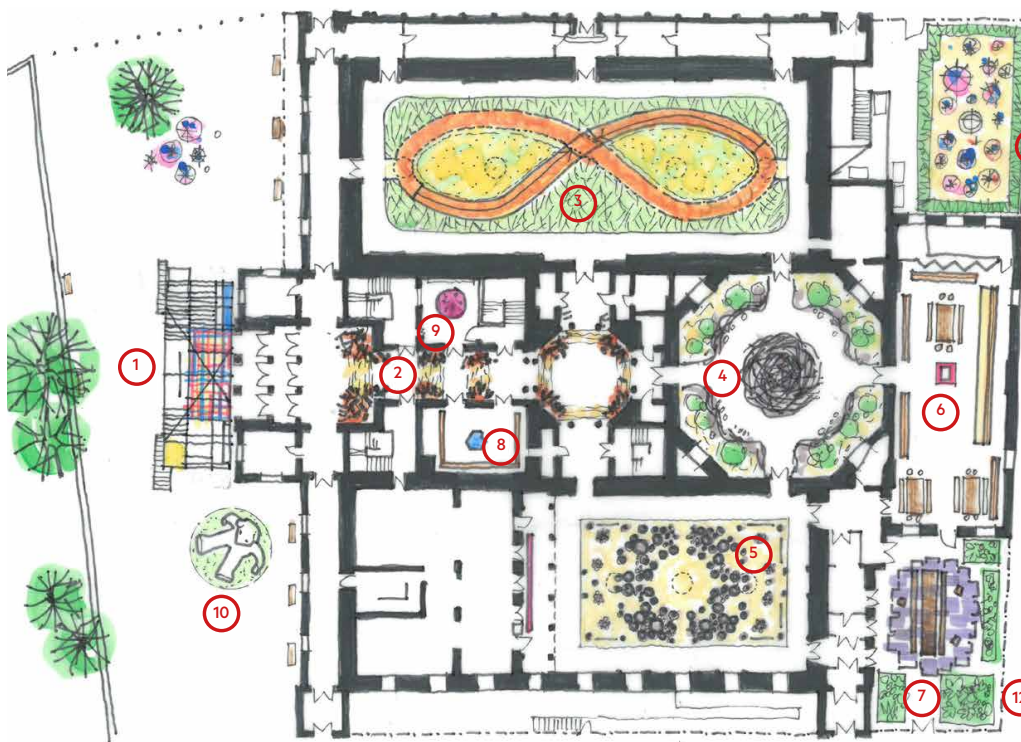
Andrew Amondson,
Living Tree 2023
Exterior Installation



Concept Art: Rosie Wood - Bath School of Design

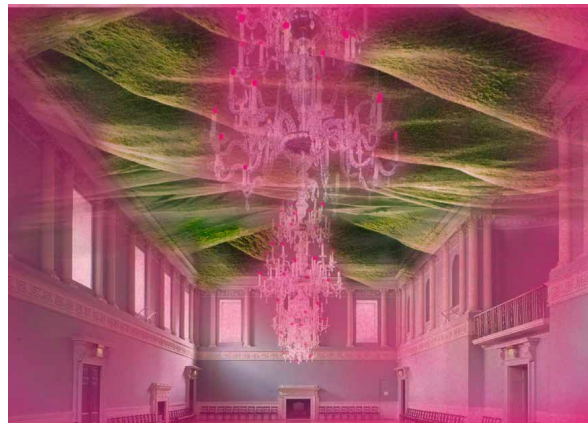
Forest of Imagination 2023

Assembly Rooms, Bath - Illustrative Layout & Content



- 1. Bird Song**
Morag Myerscough/We Are The People
- 2. Dark Forest**
Grant Associates/FCBS/Matt Leece
- 3. Infinite Nature Loop**
Andrew & Nathan Amondson
- 4. Beaver Den**
Grant Associates/Invisible Studio/Charley Brentnall
- 5. Tree Room**
FCBS/Bath Spa University/Richard
- 6. Documentation Room**
House of Imagination/Amy Corcoran/Emily Boxall
- 7. Community Forest Shelter**
Invisible Studio/ Charley Brentnall & Reading University Students
- 8. 'Sitting Quietly with the Moon'**
Clare Day
- 9. 'Its Always Ourselves We Find In The Sea'**
Martyn Ware
- 10. Dreamer**
Grant Associates
- 11. Extraordinary Forest**
House of Imagination
- 12. Bath Community Kitchen Forest**
Bath Community Kitchen

Matthew Leece, Green Ceilings



forestofimagination.com